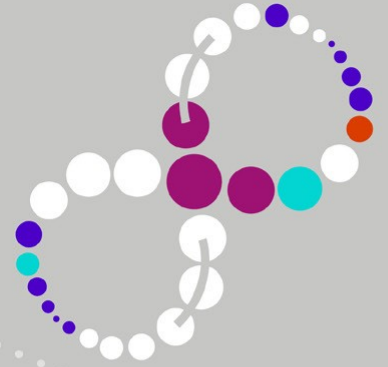




Garvan Institute
of Medical Research



Robot-assisted radical prostatectomy (RARP) post focal irreversible electroporation (IRE) ablation

Prof. Phillip Stricker

St. Vincent's Hospital, Sydney



- Techniques and Outcomes of Salvage Robot-Assisted Radical Prostatectomy (sRARP) R. De Grootea,, R. De Groot, A. Nathana,1, E. De Bleserc, N. Pavana,d, A. Sridhara, J. Kellya, P. Sooriakumarana, T. Briggsa, S. NathanaDOI: <https://doi.org/10.1016/j.eururo.2020.05.003>
- WGT & Focal
- 50% continence (Focal > WGT)
- 5% Potency
- HIFU 56% , RT 25% , Seeds 9% , IRE 1%
- PSM 39% BCR – 13%
- No Major Complications

- Peri-operative, functional and early oncologic outcomes of salvage robotic-assisted radical prostatectomy after high-intensity focused ultrasound partial ablation James E. Thompson, Ashwin N. Sridhar, Greg Shaw, Prabhakar Rajan, Anna Mohammed, Timothy P. Briggs, Senthil Nathan, John D. Kelly & Prasanna Sooriakumaran BMC Urology volume 20, Article number: 81 (2020)
- 45 Pts (30m Fup)
- 2% Major complications (Gd 3)
- 1/3 had Adj Rx
- PSMs – 44% pT3 – 66%
- 65% Continent , 0% Potent

Operative Outcomes

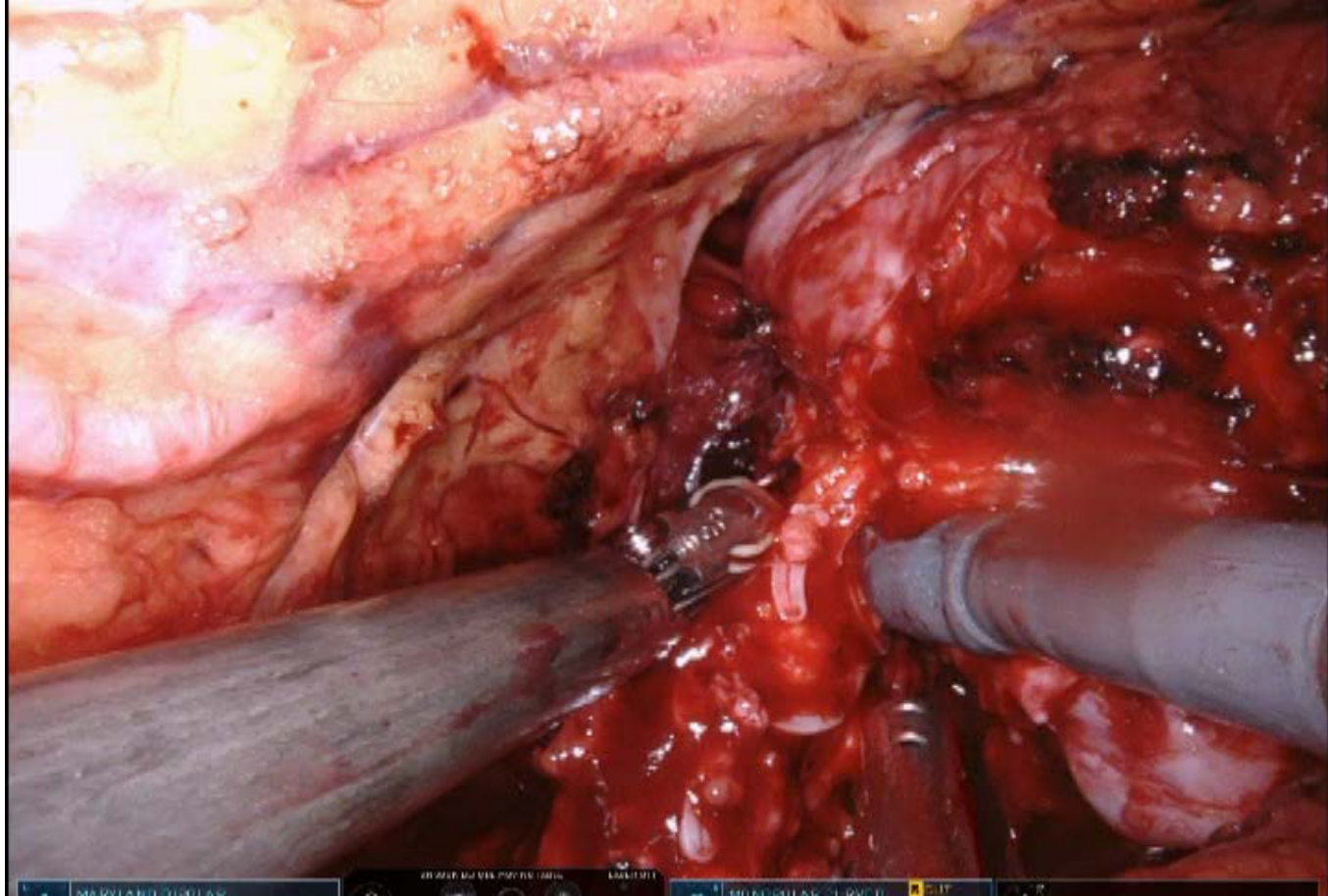
Number	N = 15
Age, median (IQR)	68 years (63 – 71)
Time from initial IRE ablation to RARP, median (IQR)	42 months (26 – 59)
Follow up from RARP, median (IQR)	19 months (14 – 24)
Prostate vol, cc (IQR)	58 (46 – 70)
Tumour volume, cc (IQR)	0.9 (0.3 – 1.1)
Index tumour (Gleason Grade), n (%)	
3 + 4 = 7	8 (54%)
4 + 3 = 7	1 (7%)
4 + 4 = 8	3 (20%)
4 + 5 = 9	3 (20%)
Index Tumour – High Grade (%)	55 (36 – 90)

Operative Outcomes After IRE

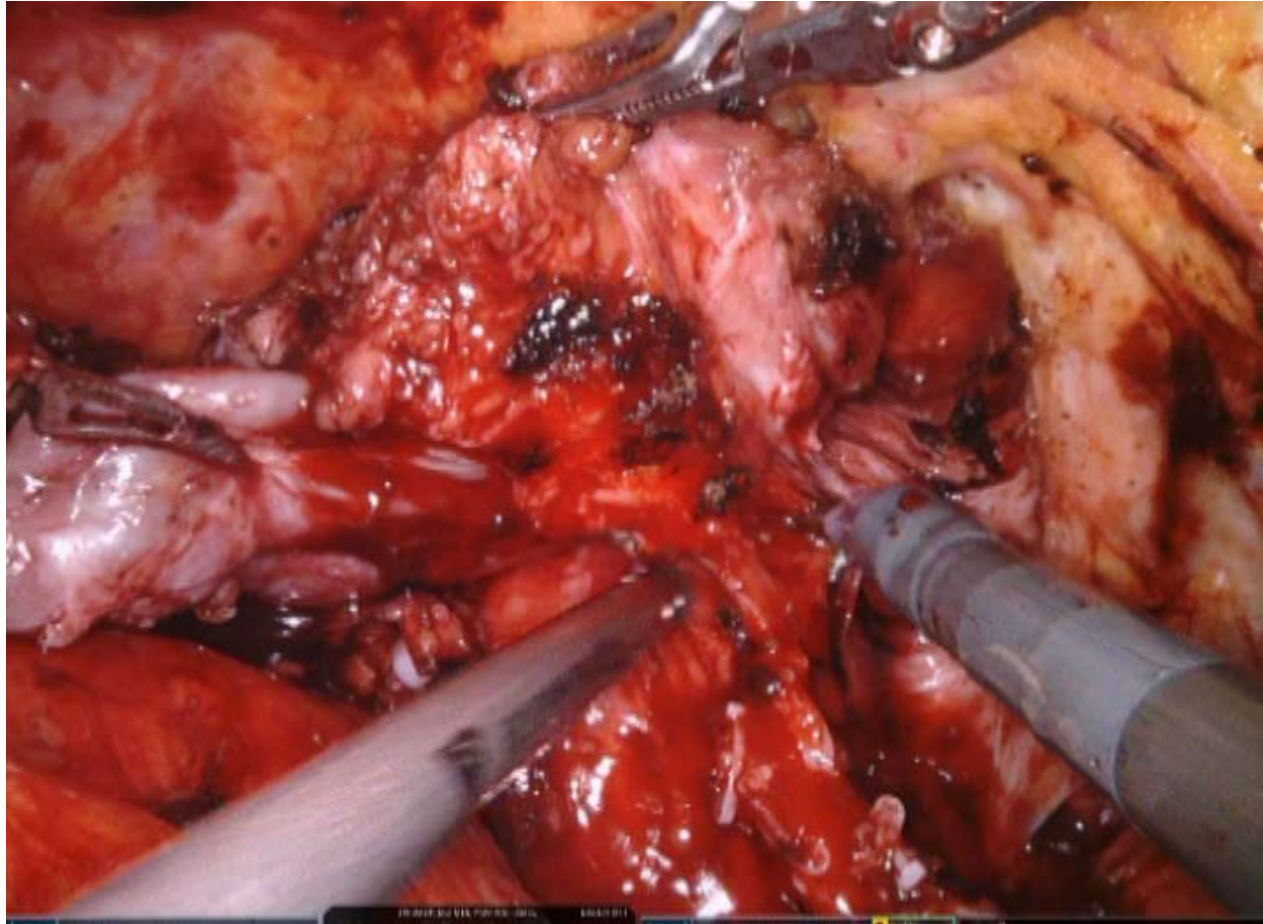
	N = 15
Composite tumour, n (%)	
3 + 4 = 7	9 (60%)
4 + 3 = 7	3 (20%)
4 + 4 = 8	-
4 + 5 = 9	3 (20%)
Composite tumour – high grade (%)	35 (21 – 64)
pT2	9 (60%)
pT3a	6 (40%)
Cribriform Pattern, n (%)	5 (33.3%)
Intraductal, n (%)	0
Extraprostatic Extension (EPE)	6 (40%)
EPE measurement, median (IQR)	0.7 mm (0.25 - 1)
Positive surgical margin (PSM)	1/15 (6.7%)
In-field tumour on RARP specimen	1/15 (6.6%)

- Median (IQR) f/w from RARP (months) - 19 mo (14 – 24)
- Nil biochemical recurrences but short follow up at this stage
- Continence at 6 months post RARP – 14/15 (94%) pad-free at 6 mo
- Potency rate – 9/15 (60%)

Salvage RARP Post IRE



Salvage RARP Post IRE



Salvage RARP Post RT

